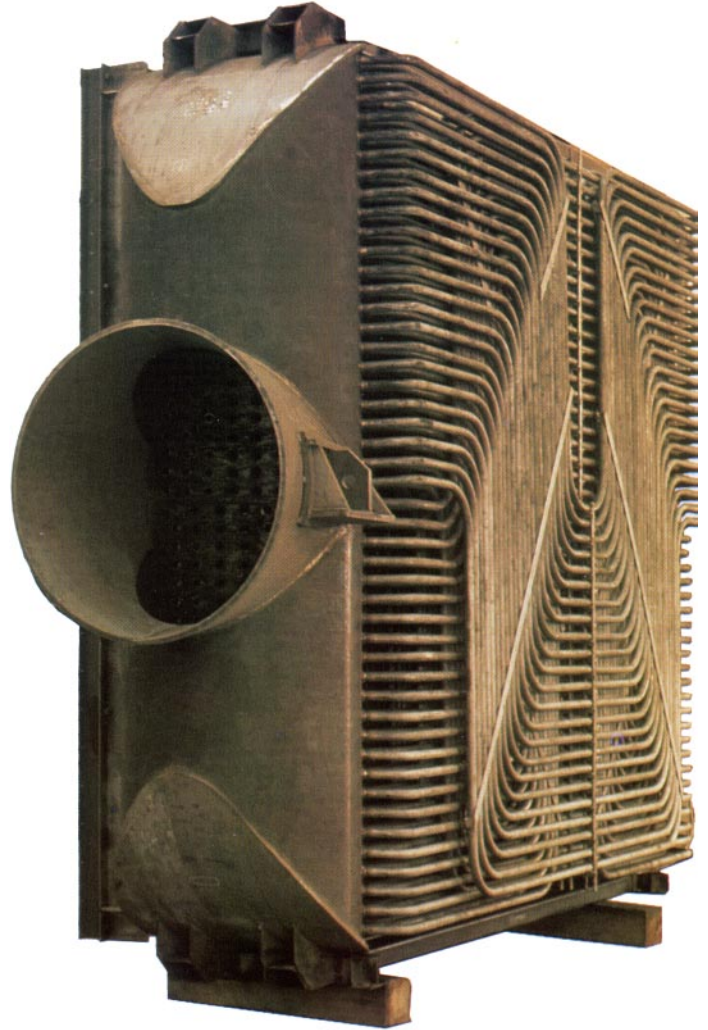




Aluminum wet pump pressure vessel used to transfer fish from a ship's hold to the dock.



Stainless steel screw conveyors used for food processing.

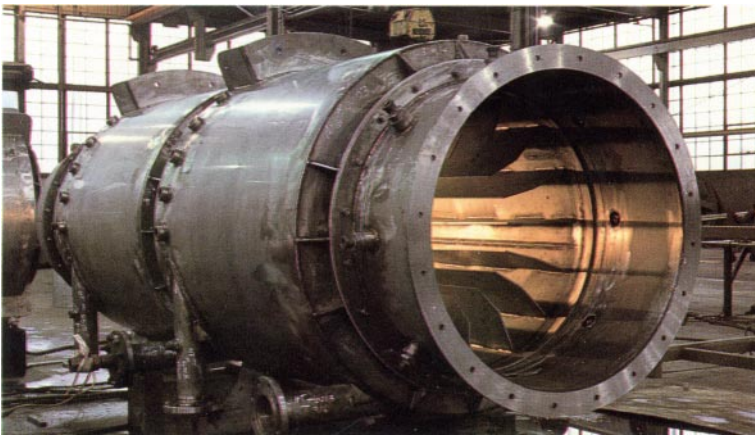


Type 321 stainless steel natural gas-fired autoclave heat exchanger.



Coper-nickel pipe used in of-shore sulfur mining as a seawater supply line and pump shaft support.

Hastelloy C-276 pressure vessel.



Special stainless steel vessel.

