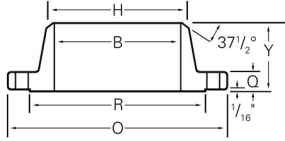


# Stainless Steel Flanges

## ANSI Stainless Steel Flanges, Class 150



### Weld Neck

Nominal Pipe Size	H	O	Q	R	Bolt Holes	Bolt Circle	B	Y	Weight	304L R/F Part Number	304L F/F Part Number	316L R/F Part Number	316LF/F Part Number
1/2	.840	3 1/2	7/16	1 3/8	4 - 5/8	2 3/8	.62	1 7/8	2	172394		174207	
3/4	1.050	3 7/8	1/2	1 11/16	4 - 5/8	2 3/4	.82	2 1/16	2	172417		174223	
1	1.310	4 1/4	9/16	2	4 - 5/8	3 1/8	1.05	2 3/16	3	172433		174249	
1 1/4	1.660	4 5/8	5/8	2 1/2	4 - 5/8	3 1/2	1.38	2 1/4	3	172459		174265	
1 1/2	1.900	5	11/16	2 7/8	4 - 5/8	3 7/8	1.61	2 7/16	4	172475	489830	174281	556467
2	2 3/8	6	3/4	3 5/8	4 - 3/4	4 3/4	2.07	2 1/2	6	172491		174304	486078
2 1/2	2 7/8	7	7/8	4 1/8	4 - 3/4	5 1/2	2.47	2 3/4	10	172514		174320	
3	3 1/2	7 1/2	15/16	5	4 - 3/4	6	3.07	2 3/4	12	172522		174346	489628
3 1/2	4	8 1/2	15/16	5 1/2	8 - 3/4	7	3.55	2 13/16	12		489505	489767	553702
4	4 1/2	9	15/16	6 3/16	8 - 3/4	7 1/2	4.03	3	17	172548	489490	174362	489636
5	5 9/16	10	15/16	7 5/16	8 - 7/8	8 1/2	5.05	3 1/2	21	172572		174388	
6	6 5/8	11	1	8 1/2	8 - 7/8	9 1/2	6.07	3 1/2	26	172603		174401	489644
8	8 5/8	13 1/2	1 1/8	10 5/8	8 - 7/8	11 3/4	7.98	4	42	172629		174427	
10	10 3/4	16	1 3/16	12 3/4	12 - 1	14 1/4	10.02	4	54	172637		174443	
12	12 3/4	19	1 1/4	15	12 - 1	17	12	4 1/2	88	172645		174469	
14	14	21	1 3/8	16 1/4	12 - 1 1/8	18 3/4	*	5	114	494869			
18	18	25	1 9/16	21	16 - 1 1/4	22 3/4	*	5 1/2	165	517099			
20													
24													

\*To be specified by purchaser.

Dimensions are in inches. All weights are approximate.  
 Sizes not shown may be available upon request.