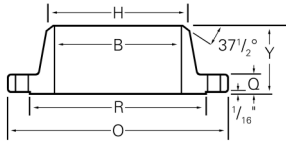
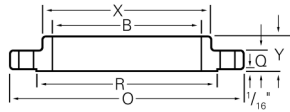


# Forged Stainless Steel Flanges

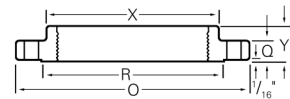
## Flanges, ANSI Class 300



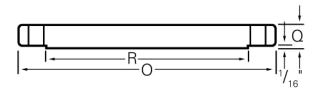
Welding Neck



Slip-On



Threaded



Blind

- A forged stainless steel flange normally used with “annealed” pipe for 300 pound pressure systems.
- Alloys stocked include Grades F304L and F316L.
- Flanges conform dimensionally to ANSI B16.5, Class 300.
- Heavier class flanges and non-standard flanges are available.
- Flanges with a standard raised-face are stocked but are available with a variety of other standard facings.
- Material conforms to ASTM A 182 and ASME SA-182.
- Reducing flanges and socket-welding flanges are supplied machined from blind flanges.

Nominal Pipe Size	H	O	Q	R	X	Bolt Holes	Bolt Circle	B Weld Neck	B Slip-On	B Lap Joint	Y Weld Neck	Y Threaded Slip-On	Y Lap Joint	Weights				
														Weld Neck	Slip-On	Blind	Joint	Lap Thread
1/2	.840	3 3/4	9/16	1 3/8	1 1/2	4 - 5/8	2 5/8	.62	.88	.90	2 1/16	7/8	7/8	2	2	3	2	2
3/4	1.05	4 5/8	5/8	1 11/16	1 7/8	4 - 3/4	3 1/4	.82	1.09	1.11	2 1/4	1	1	3	3	3	2	3
1	1.31	4 7/8	11/16	2	2 1/8	4 - 3/4	3 1/2	1.05	1.36	1.38	2 7/16	1 1/16	1 1/16	4	3	4	3	3
1 1/4	1.66	5 1/4	3/4	2 1/2	2 1/2	4 - 3/4	3 7/8	1.38	1.70	1.72	2 9/16	1 1/16	1 1/16	5	5	6	5	5
1 1/2	1.90	6 1/8	13/16	2 7/8	2 3/4	4 - 7/8	4 1/2	1.61	1.95	1.97	2 11/16	1 3/16	1 3/16	7	7	7	7	7
2	2 3/8	6 1/2	7/8	3 5/8	3 5/16	8 - 3/4	5	2.07	2.44	2.46	2 3/4	1 5/16	1 5/16	8	7	8	7	7
2 1/2	2 7/8	7 1/2	1	4 1/8	3 15/16	8 - 7/8	5 7/8	2.47	2.94	2.97	3	1 1/2	1 1/2	12	10	12	10	10
3	3 1/2	8 1/4	1 1/8	5	4 5/8	8 - 7/8	6 5/8	3.07	3.57	3.60	3 1/8	1 11/16	1 11/16	18	13	16	15	14
3 1/2	4	9	1 3/16	5 1/2	5 1/4	8 - 7/8	7 1/4	3.55	4.07	4.13	3 3/16	1 3/4	1 3/4	20	16	21	16	16
4	4 1/2	10	1 1/4	6 3/16	5 3/4	8 - 7/8	7 7/8	4.03	4.57	4.60	3 3/8	1 7/8	1 7/8	24	24	28	24	24
5	5 9/16	11	1 3/8	7 5/16	7	8 - 7/8	9 1/4	5.05	5.66	5.69	3 7/8	2	2	36	29	37	29	31
6	6 5/8	12 1/2	1 7/16	8 1/2	8 1/8	12 - 7/8	10 5/8	6.07	6.72	6.75	3 7/8	2 1/16	2 1/16	45	36	48	38	36
8	8 5/8	15	1 5/8	10 5/8	10 1/4	12-1	13	7.98	8.72	8.75	4 3/8	2 7/16	2 7/16	69	56	79	55	56
10	10 3/4	17 1/2	1 7/8	12 3/4	12 5/8	16 - 1 1/8	15 1/4	10.02	10.92	10.88	4 5/8	2 5/8	3 3/4	100	77	120	88	80
12	12 3/4	20 1/2	2	15	14 3/4	16 - 1 1/4	17 3/4	12.00	12.88	12.92	5 1/8	2 7/8	4	142	113	183	139	110
14	14	23	2 1/8	16 1/4	16 3/4	20 - 1 1/4	20 1/4	*	14.14	14.18	5 5/8	3	4 3/8	206	159	241	184	164
16	16	25 1/2	2 1/4	18 1/2	19	20 - 1 3/8	22 1/2	*	16.16	16.19	5 3/4	3 1/4	4 3/4	249	210	315	234	220
18	18	28	2 3/8	21	21	24 - 1 3/8	24 3/4	*	18.18	18.20	6 1/4	3 1/2	5 1/8	306	253	414	305	280
20	20	30 1/2	2 1/2	23	23 1/8	24 - 1 3/8	27	*	20.20	20.25	6 3/8	3 3/4	5 1/2	369	307	515	375	325
24	24	36	2 3/4	27 1/4	27 5/8	24 - 1 5/8	32	*	24.25	24.25	6 5/8	4 3/16	6	519	490	800	530	490

\* To be specified by purchaser.  
 Dimensions are in inches. All weights are in pounds based on a metal density of .29 lb/in<sup>3</sup>