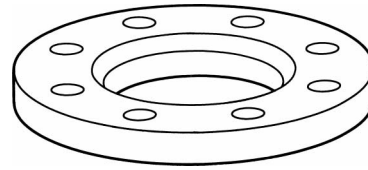
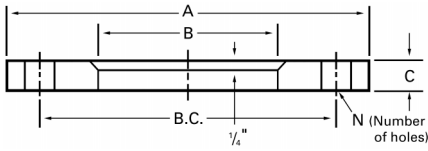


Steel Backing Flanges

SK-70-SO and SK-70-PSO Cast Steel Backing Flanges



- A medium-weight steel backing flange for use with slip-on type stub ends when a normal tapered steel backing flange is not desired.
- Cast in commercial quality steel.
- Cast hole patterns per ANSI B16.1, Class 125 (identical to ANSI B16.5, Class 150 through 24" size).
- Coated with red oxide primer. Galvanized, epoxy and other coatings are also available.
- Normally used with Alaskan slip-on stub ends SK-36-SO, SK-36-PSO, SK-38-SO and SK-38-PSO.

SK-70-SO

Made to Fit With OD Tube Size Slip-On Stub Ends

Tube OD	2	2 1/2	3	4	6	8	10	12	14	16	18	20	24	30	36	42	48
A (OD)	6	7	7 1/2	9	11	13 1/2	16	19	21	23 1/2	25	27 1/2	32	38 3/4	46	53	59 1/2
B (ID)	2 5/8	3 1/8	3 3/4	4 3/4	7	9	11 1/8	13 1/8	15	17	19	21	25	31 1/4	37 1/4	43 3/8	49 3/8
C (THK)	5/8	5/8	3/4	3/4	7/8	7/8	1	1	1	1	1 1/8	1 1/8	1 1/8	1 1/4	1 1/4	1 3/8	1 3/8
B.C.	4 3/4	5 1/2	6	7 1/2	9 1/2	11 3/4	14 1/4	17	18 3/4	21 1/4	22 3/4	25	29 1/2	36	42 3/4	49 1/2	56
Hole Size	3/4	3/4	3/4	3/4	7/8	7/8	1	1	1 1/8	1 1/8	1 1/4	1 1/4	1 3/8	1 3/8	1 5/8	1 5/8	1 5/8
N	4	4	4	8	8	8	12	12	12	16	16	20	20	28	32	36	44
Weights	3.7	5.1	6.6	8.7	12.6	18.3	26.5	39.0	44.3	53.6	59.3	70.6	89.8	131	178	254	301

SK-70-PSO

Made to Fit With Nominal Pipe Size Slip-On Stub Ends (Identical to SK-70-SO Except for B Dimension)

Nominal

Pipe Size	2	2 1/2	3	4	6	8	10	12	14 thru 48 see SK-70-SO
Pipe OD	2 3/8	2 7/8	3 1/2	4 1/2	6 5/8	8 5/8	10 3/4	12 3/4	
B (ID)	3	3 1/2	4 1/8	5 1/8	7 3/8	9 3/8	11 5/8	13 5/8	
Weights	3.4	4.7	6.1	8.2	11.6	16.9	23.9	36.0	

Dimensions are in inches. All weights are in pounds based on a metal density of .2836 lb./in.³
When ordering galvanized flanges, specify SK-70-SOG or SK-70-PSOG.